



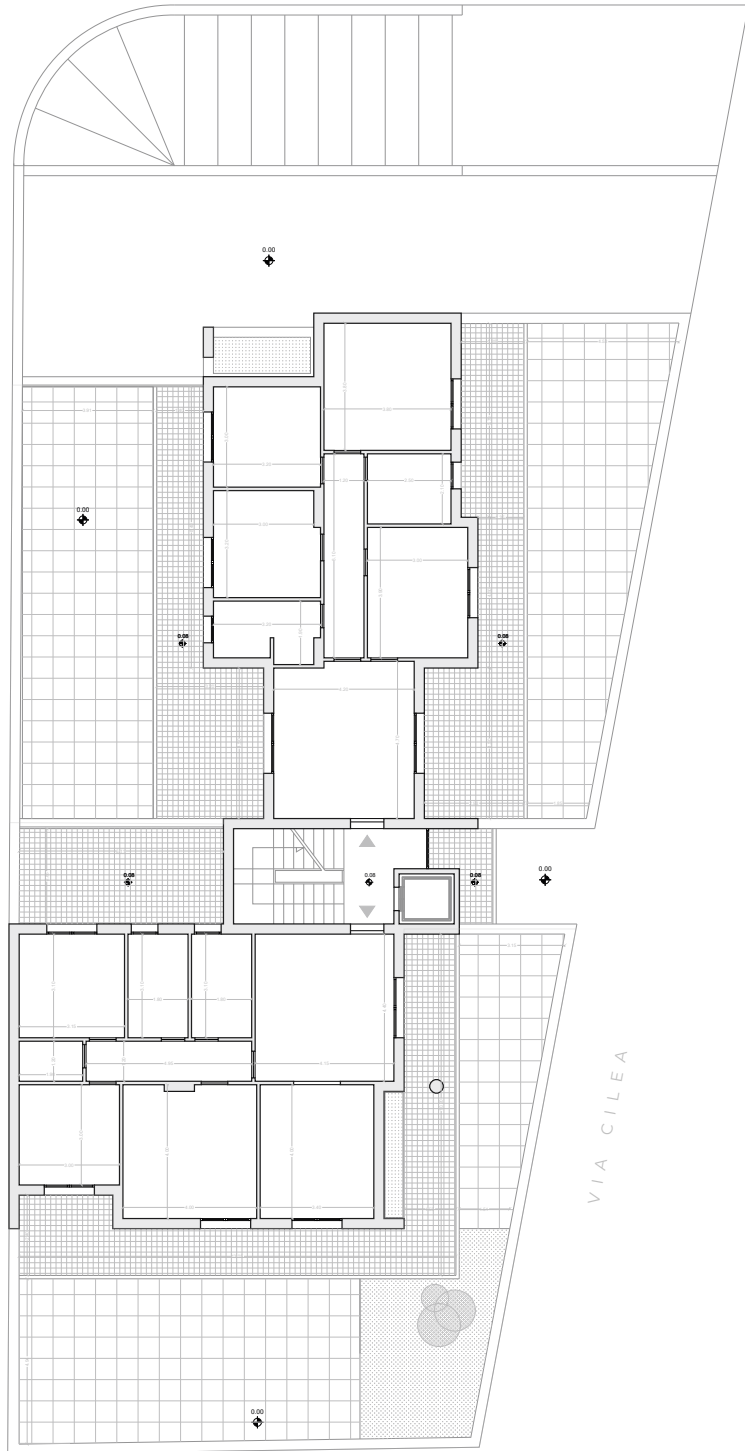
RESIDENZE CERASOLE

CASERTA, VIA CILEA 1



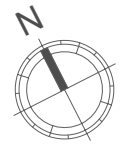
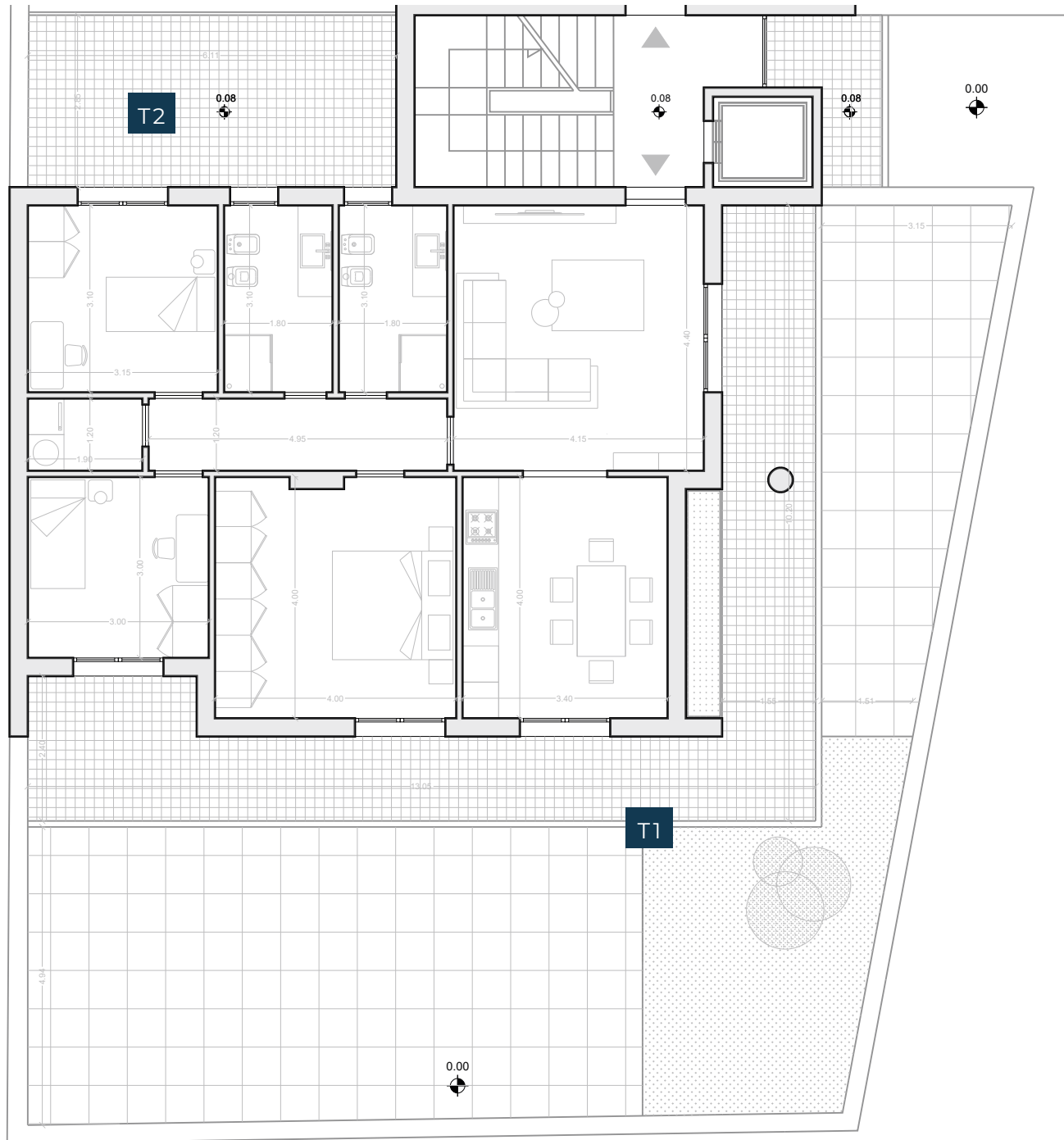
MEVA ARCHITETTURA

Via Parito 48
81054 San Prisco
Caserta

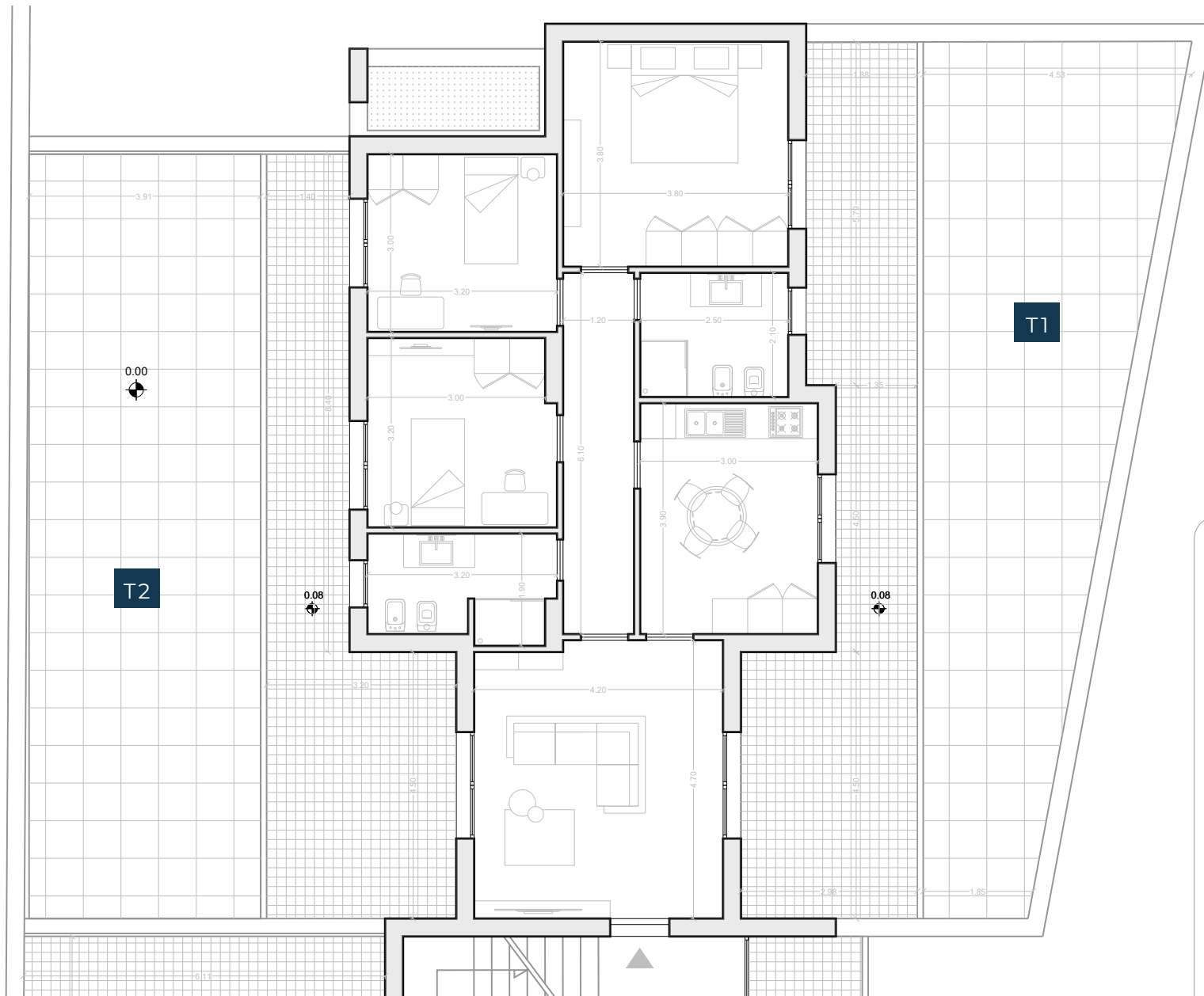


VIA CILEA

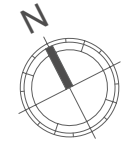




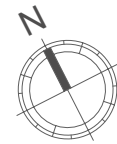
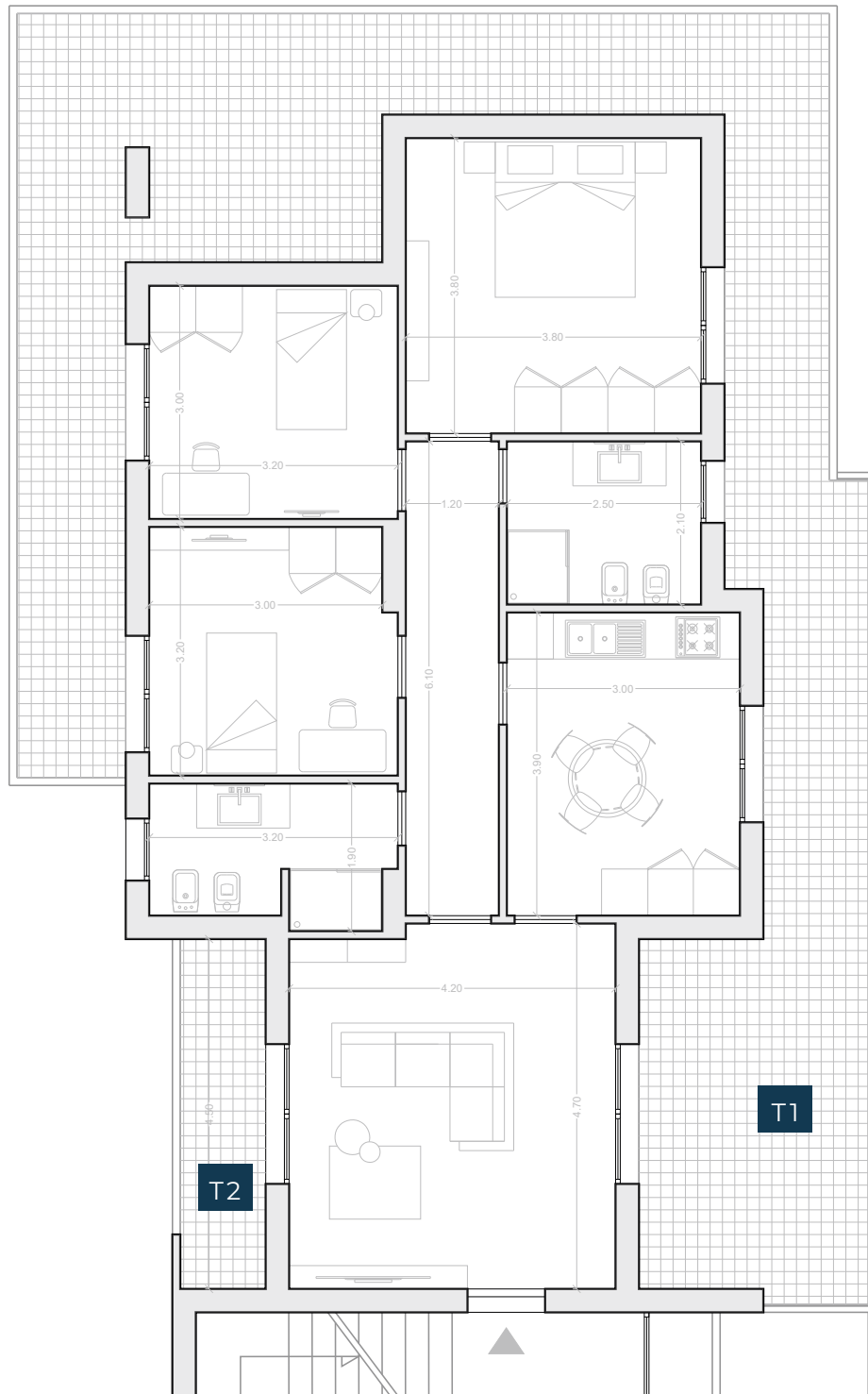
SUP.LORDA	MQ
INTERNO	101,32
TERRAZZO T1	140,90
TERRAZZO T2	20,12



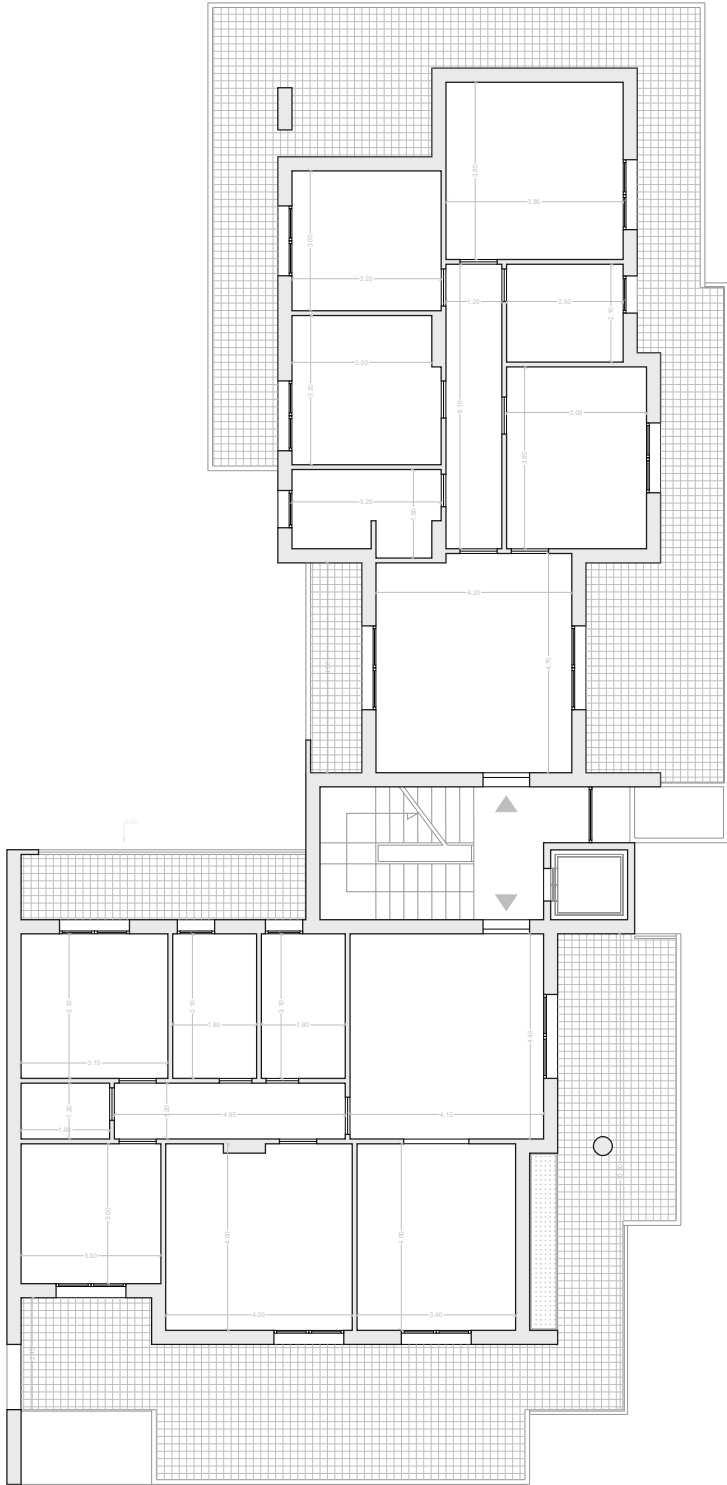
SUP.LORDA	MQ
INTERNO	100,00
TERRAZZO T1	86,40
TERRAZZO T2	83,40

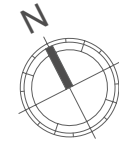


SUP.LORDA	MQ
INTERNO	101,32
TERRAZZO T1	57,60
TERRAZZO T2	9,82



SUP.LORDA	MQ
INTERNO	100,00
TERRAZZO T1	60,34
TERRAZZO T2	5,40

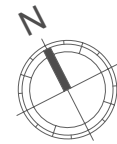
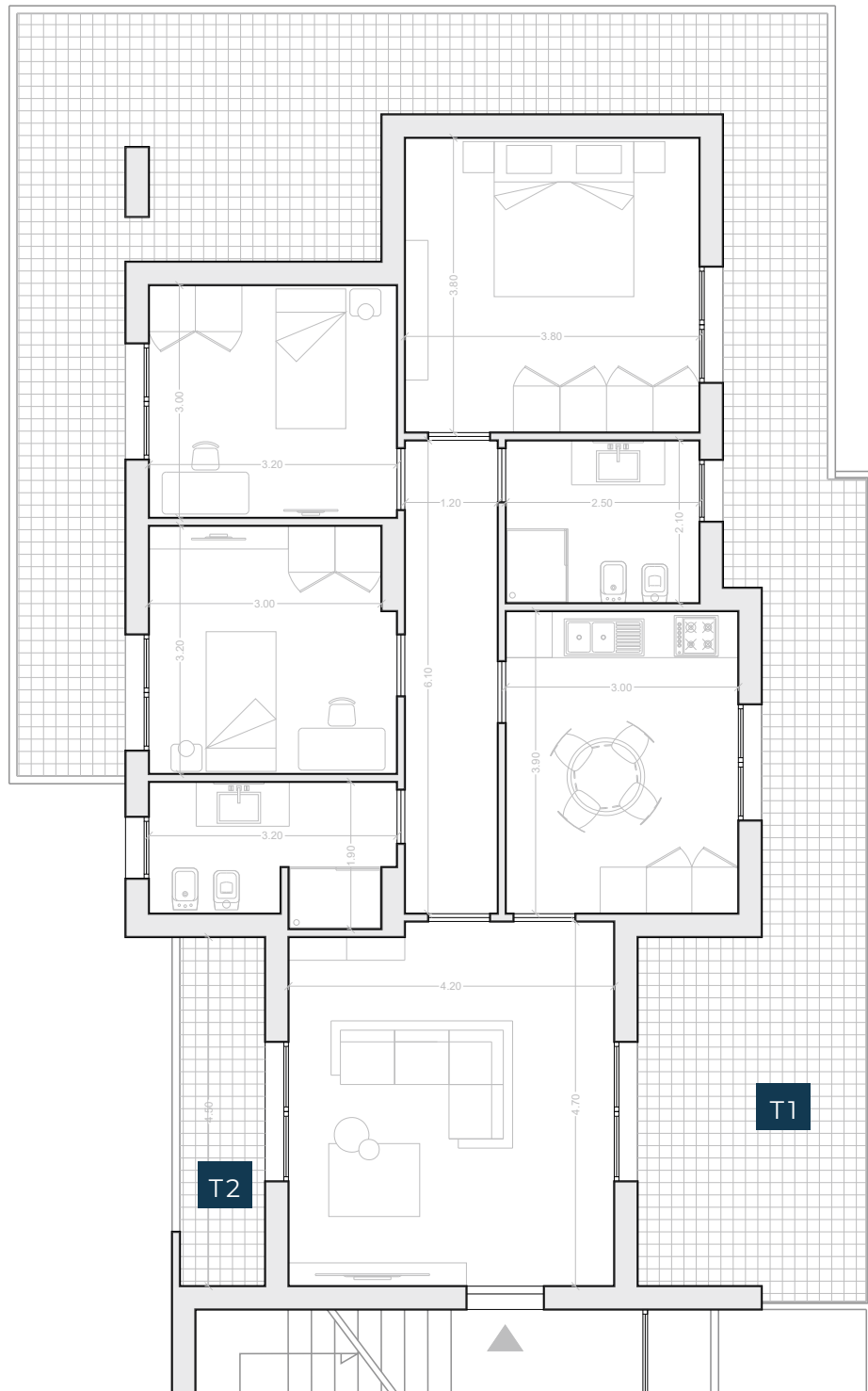




SUP.LORDA	MQ
INTERNO	101,32
TERRAZZO T1	57,60
TERRAZZO T2	9,82



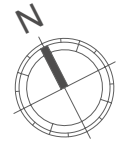
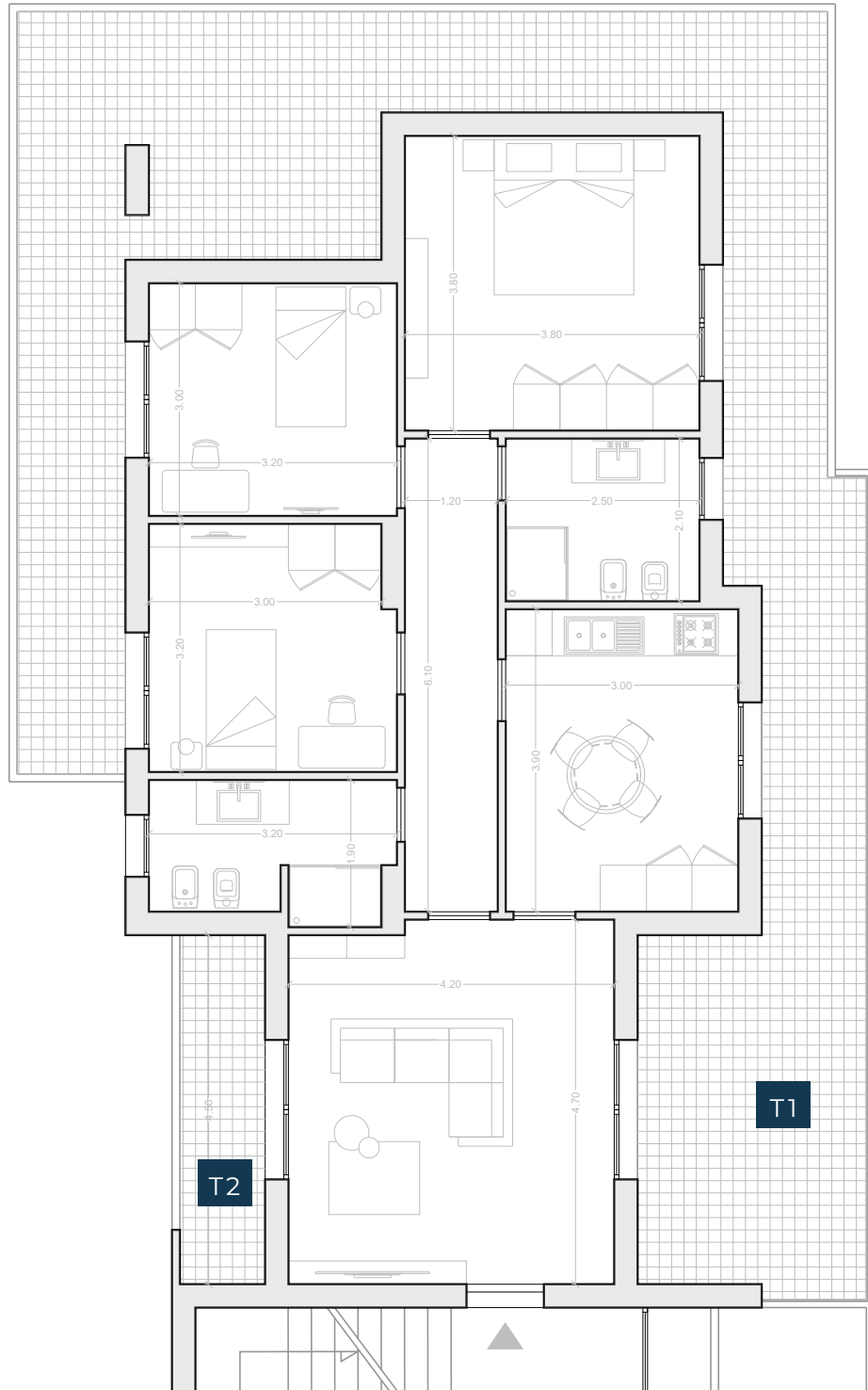
SUP.LORDA	MQ
INTERNO	101,32
TERRAZZO T1	57,60
TERRAZZO T2	9,82



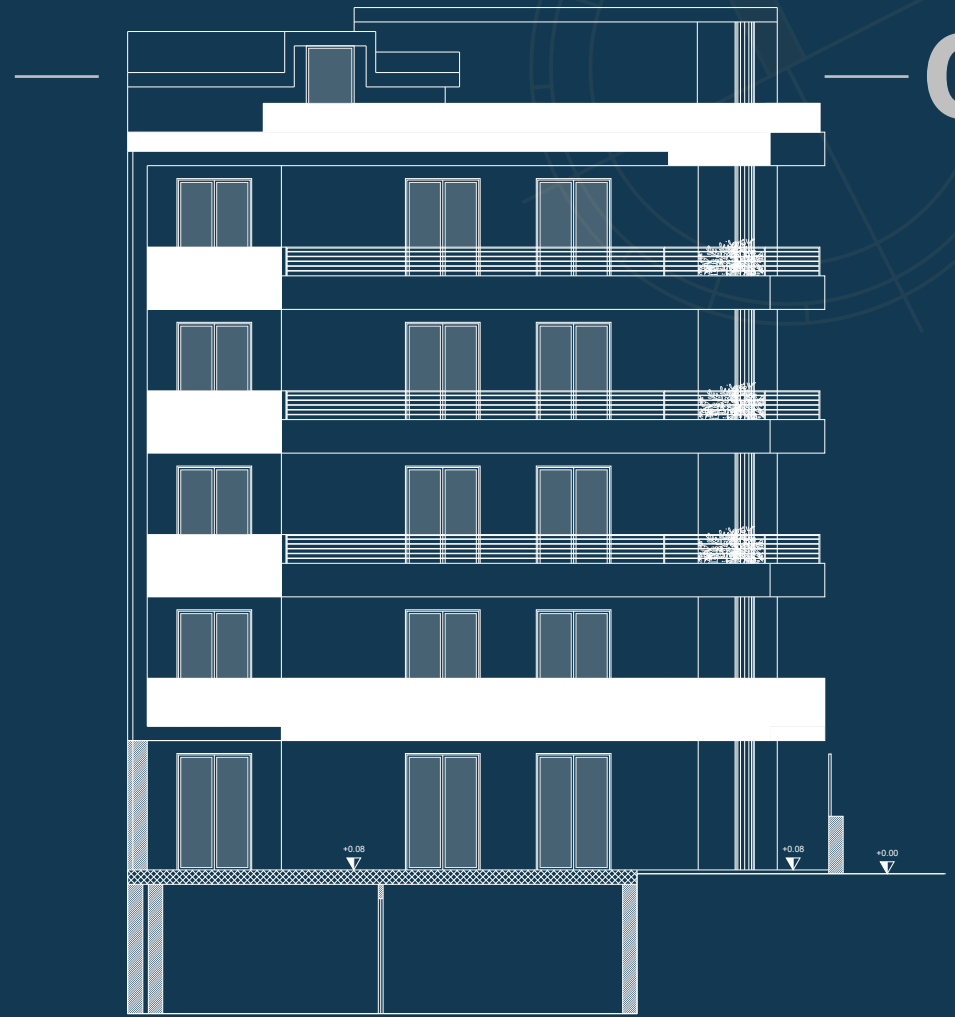
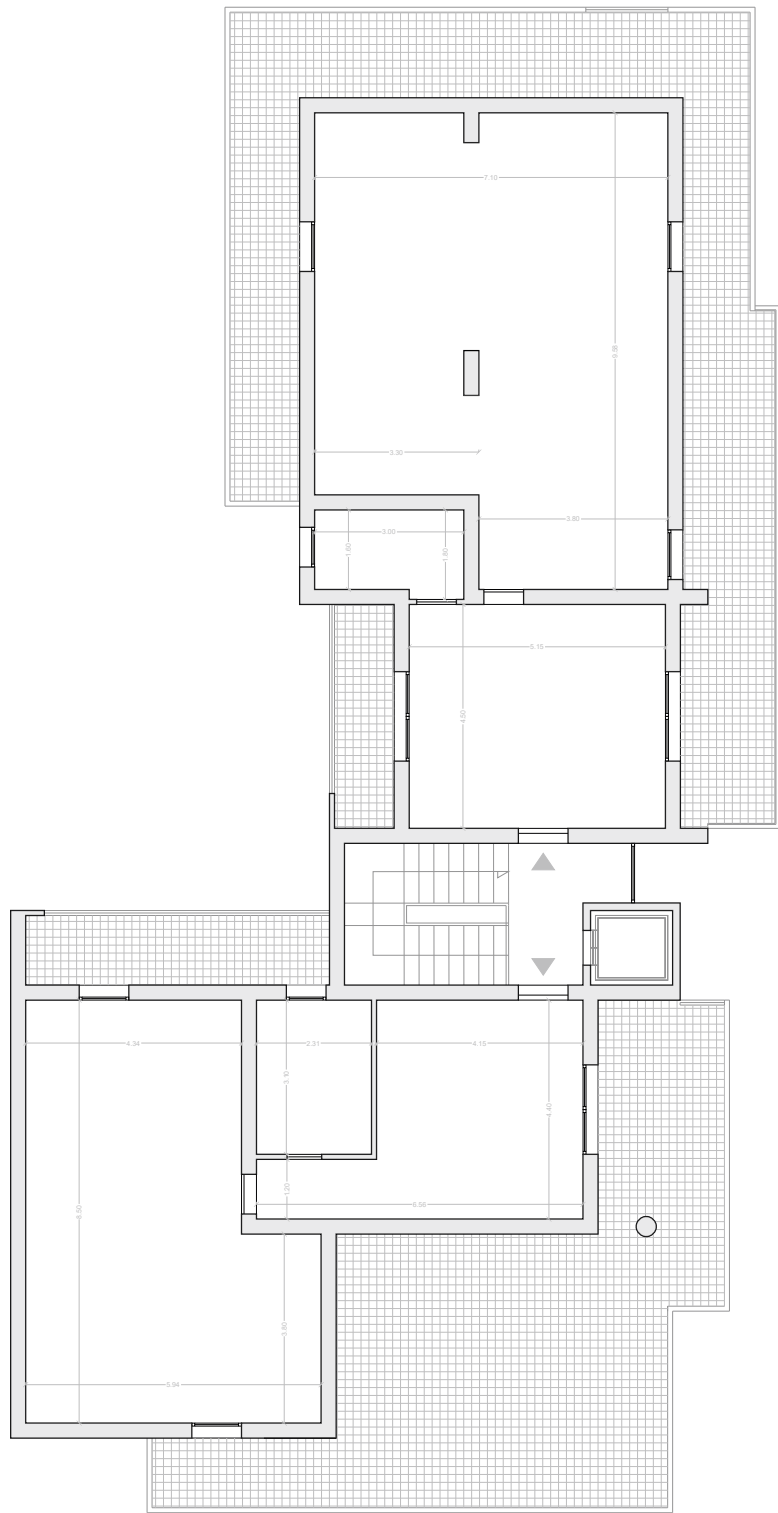
SUP.LORDA	MQ
INTERNO	100,00
TERRAZZO T1	60,34
TERRAZZO T2	5,40

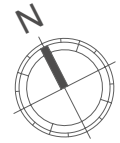
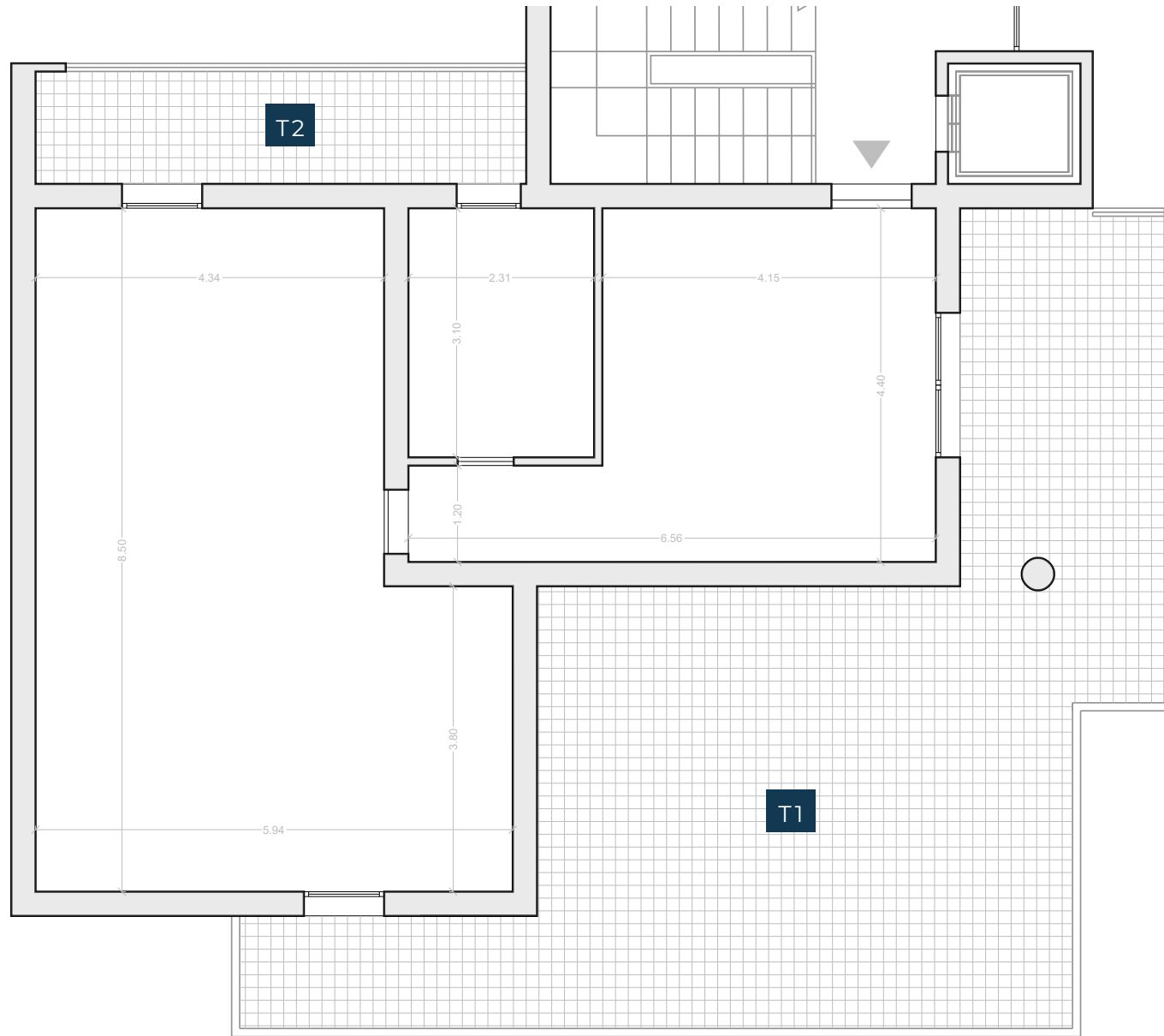


SUP.LORDA	MQ
INTERNO	101,32
TERRAZZO T1	57,60
TERRAZZO T2	9,82

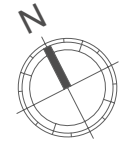
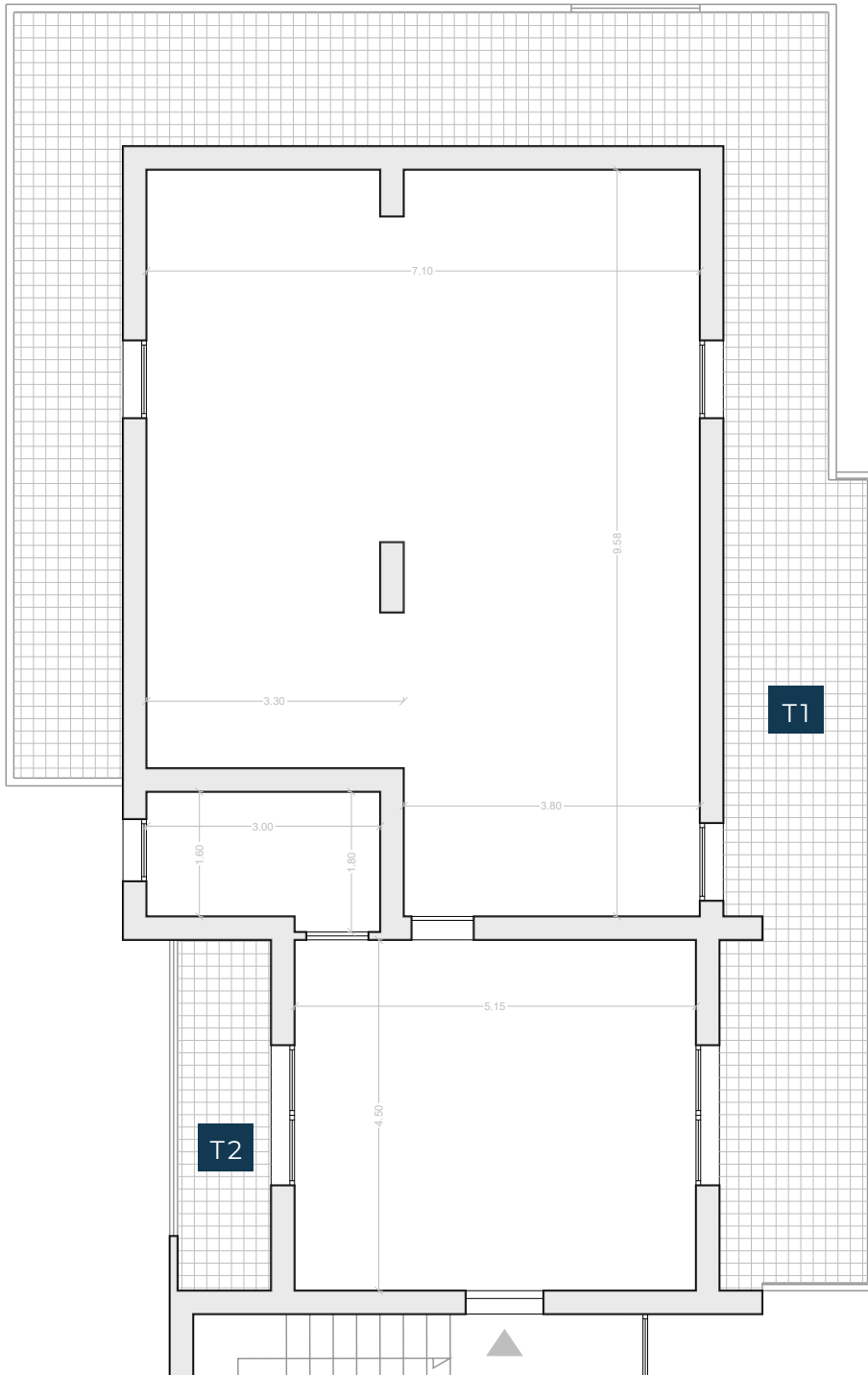


SUP.LORDA	MQ
INTERNO	100,00
TERRAZZO T1	60,34
TERRAZZO T2	5,40





SUP.LORDA	MQ
INTERNO	85,00
TERRAZZO T1	58,00
TERRAZZO T2	9,82



SUP.LORDA	MQ
INTERNO	100,00
TERRAZZO T1	58,68
TERRAZZO T2	5,40

GARAGE



SUP.LORDA MQ

GARAGE 1 39,90

GARAGE 2 18,30

GARAGE 3 20,60

GARAGE 4 32,45

GARAGE 5 26,90

GARAGE 6 20,10

GARAGE 7 17,60

GARAGE 8 26,20

GARAGE 9 17,50

GARAGE 10 17,80

GARAGE 11 18,60

GARAGE 12 63,20





MEVA ARCHITETTURA

Via Parito 48
81054 San Prisco - Caserta